



---

## **Returning to Campus #1.1**

International Student Emergency Support

Compiled by the UTSU President's Team

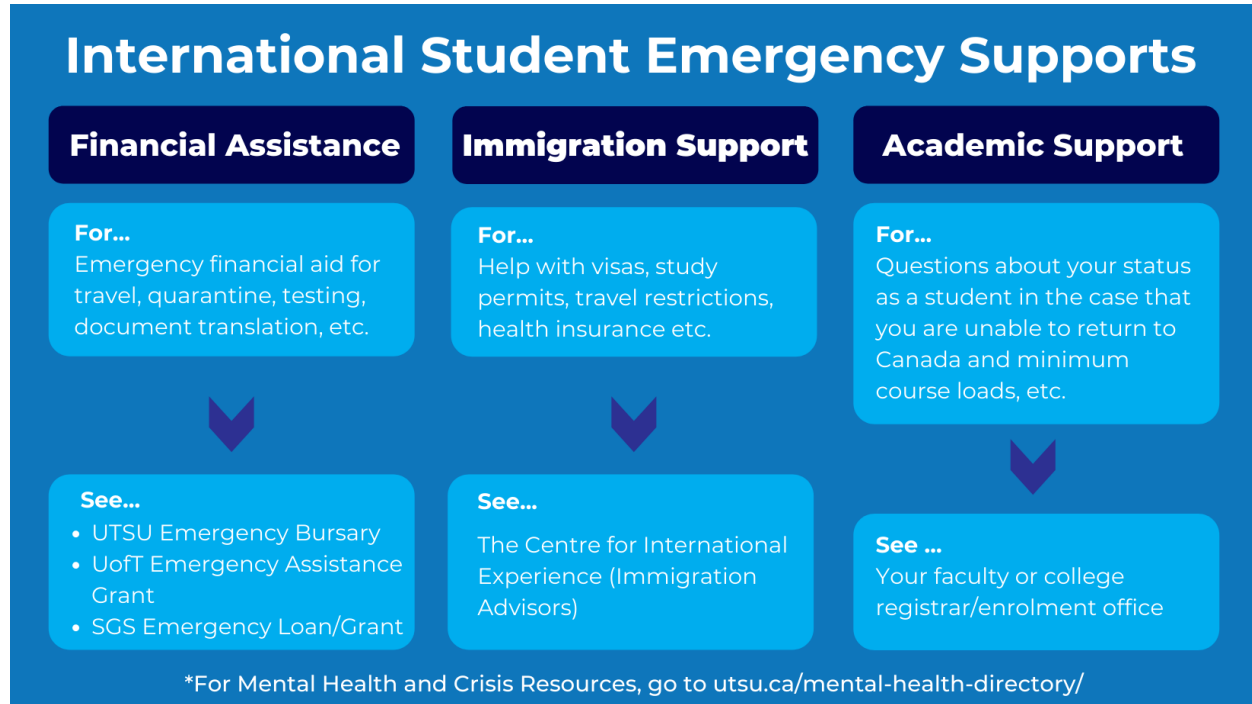
---

***Last updated August 20, 2021. Information on this document is subject to change as federal, provincial, and university regulations change. Please reference the linked official sources to confirm all information.***

Please contact [leila.tjiang@utsu.ca](mailto:leila.tjiang@utsu.ca) or [president@utsu.ca](mailto:president@utsu.ca) with questions.



## **Summary of this Guide**



## **I need financial assistance to return to campus. Where can I receive support?**

You could receive support from a variety of emergency financial assistance programs for costs incurred as a result of the pandemic (e.g. costs associated with quarantining, pre-departure tests, the translation of official documents, etc.). The flexibility and criteria of the following supports vary so we recommend that you carefully review the details of each program at the links below.

### **1. UTSU Emergency Bursary**

- a. Has a temporary maximum disbursement of \$500.00. This amount was increased from \$250.00 due to the pandemic.
- b. Students can apply to this bursary once every term, meaning that if you apply in August, you can reapply in September once the fall term begins. This way, you could receive up to \$1000.00 to help cover the cost of your return to campus.
- c. Does not rely on reimbursement, meaning that if you cannot pay out-of-pocket for upfront expenses, you can simply demonstrate your need for financial assistance to the UTSU to receive funds.
- d. [Learn more and apply for this bursary here.](#)



## **2. UofT Emergency Assistance Grants**

- a. The average and maximum disbursement of this grant is not specified on the website.
- b. Will take 4-6 weeks to approve.
- c. Relies on reimbursement, meaning you must be able to pay upfront costs out-of-pocket before receiving financial assistance.
- d. All questions regarding your application before and after it is submitted should be directed toward the financial department of your faculty or college.
- e. Learn more and apply for this grant [here](#).

## **3. School of Graduate Studies Emergency Loan and Grant**

- a. For the loan:
  - i. The average disbursement is \$1,000 to \$1,500 and repayment on the loan is typically set to about 4 months after disbursement.
  - ii. Decisions on loan disbursement will be made within 2 business days.
  - iii. Learn more and apply for this loan [here](#).
- b. For the grant:
  - i. The average and maximum disbursement of this grant is not specified on the website.
  - ii. Decisions on grant disbursement will be made within 2-3 weeks.
  - iii. Learn more and apply for this grant [here](#).

## **I have questions about my visa/study permit and require immigration support. Who should I consult?**

**Reach out to the Centre for International Experience** for questions regarding immigration.

The CIE's Immigration Advisors can help you:

- "Understand your document requirements including study permit, entry visas, work permits etc.
- Understand the immigration requirements for your dependents.
- Choose the right immigration workshop and/or information session to learn about study permits, entry visas, work permits, permanent residency, USA visas and Canadian income tax.
- Locate additional appropriate services and resources."

Learn more about CIE immigration advisors and book an appointment [here](#).

Note that appointments are limited and only opened on a weekly basis so make sure to regularly check the CLNx portal if you cannot get an appointment at first.



## **I'm unsure if I will be able to return to campus at all this semester. Who should I consult for academic support?**

**Contact your faculty's or college's registrar or enrolment office** if you have questions about your status as a UofT student if you are unable to return to campus for the fall. Most offices will have regular hours during which you can call them, but you can also email most offices to set up an appointment.

Go to this [link](#) for a directory of all registrarial services at UofT.

When considering your enrolment status for the fall:

- For returning students, at least in the Faculty of Arts and Science, there are options for cancelling your registration or requesting a leave of absence. Go [here](#) for more information.
- For incoming first year students, there is the possibility of deferring your enrolment. Go [here](#) for more information.
- Keep in mind that you may have to maintain a minimum course load in order to preserve your immigration status while you are out of the country.

*All in all, you should consult BOTH your registrar and an immigration advisor with questions regarding your overall status as a student if you are unable to physically return to campus this fall.*

*Moreover, as of August 20, 2021, most academic units at UofT have not promised to provide any virtual accomodations for those who cannot return on campus for the fall. For some faculties, including Arts and Science, online attendance has been promised through the first two weeks of the school year (until September 23), but not beyond that. That being said, there is a possibility that full online accommodations will be provided to students for the remainder of the fall term.*

**Do not make any preemptive decisions regarding your enrolment without consulting your registrar and an immigration advisor, as the availability of accommodations may change in the coming weeks.**



## **I need to access mental health support. Where can I go?**

Please see the [UTSU's mental health directory](#) for support. For immediate crisis support, see the following hotlines:

[Distress Centres of Greater Toronto](#) (24/7/365)

416-408-HELP / 416-408-4357

[Canada Suicide Prevention Service \(CSPS\)](#) (24/7/365)

1-833-456-4566

Text: 45645 (only available from 4pm-12am)